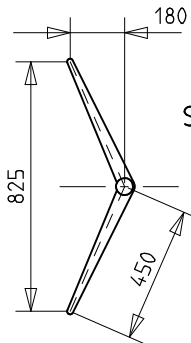


1/4" bolt
Eye swage
for backstay

6370 Max - Mast tip
to mast step



S1 & S2

Spreader C.L.
4370±10 to mast step

S2

Forestay keyway
4410±10 to mast step

Side stay
4315±10 to mast step

Jib luff keyway
4325±10 to mast step

13 ft SKIFF

MAST AND RIGGING MEASUREMENT PLAN

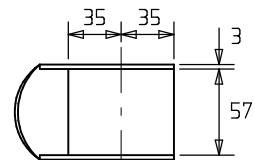
NSW 16 ft SKIFF ASSOCIATION
DRW No 13FS/5B JUNE 06

Spreader C.L.
2760±100 to mast step

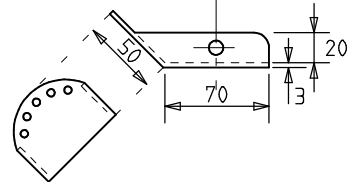
S1

Wire sizes

F/Stay 1/8"
Side stay 3/32"
Back stay 3/32"
D1 3/32"



MAST STEP



5/32" Saddle
745±10 to mast step

Gooseneck (RM680) C.L.
710±10 to mast step

D1 - 730±10 to mast step

Tee
D1 - Bearing point
to bearing point
- 990mm

Back stay bearing point
205 to mast step

Mast step

Side stay bearing point
185 to mast step

205

Pin